

Requirements integration with design

IRQA Integration with Sparx Enterprise Architect

Streamline your process using specialized solutions for RDM and Design

Using specialized tools provide a number of benefits, including:

- Use of best-in-class, leading tools that best fit your needs.
- Flexible and open architecture to select other choices of integration at any moment.
- Tools specifically designed to integrate with other systems.
- Cost effective solution.
- Reactive response to market needs.
- Solutions with easy configuration and short adoption time.

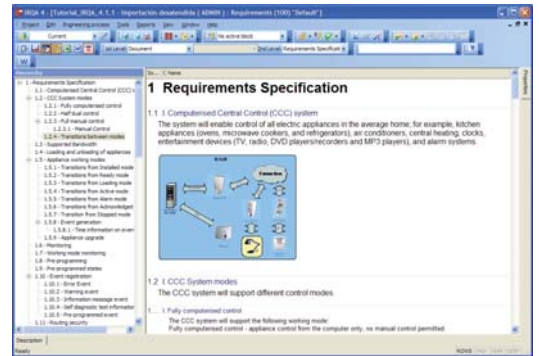
Increase success using a dedicated Requirements Definition and Management tool

Requirements Definition and Management is a key process in the development lifecycle with a high impact in the rest of the activities and phases, including Project Management, Risk Management, Design, etc.

Requirements tools are specifically designed to take into account different perspectives of the RDM process. Some of these are critical to successfully deploy an RDM process and tool:

How to involve all the stakeholders in the Requirements process?

- IRQA provides specific views according to the different technical and non-technical profiles accessing the tool (MS Word and MS Excel like views, etc...).
- IRQA provides RTF descriptions in order to capture complete information, including support to OLE objects (Visio diagrams, MS Project files, etc...).
- IRQA allows defining the user interface (buttons and tabs) according to the role.

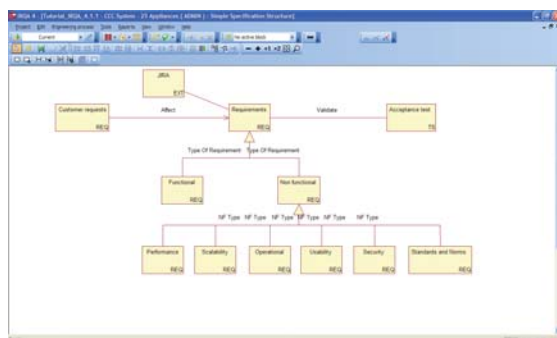
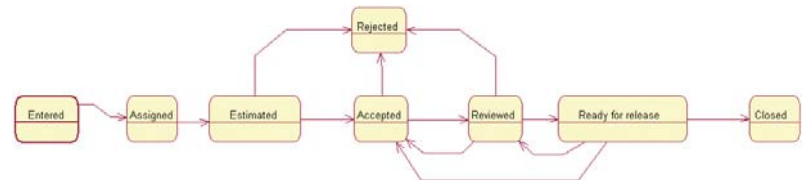


How to perform an effective change management and change impact analysis?

- IRQA provides a traceability view to visualize all affected elements at all levels, including Requirements and Use Cases from Sparx Enterprise Architect.
- IRQA allows to control all changes performed to requirements and use cases through the suspect links management, independently of whether the change was performed in IRQA or Enterprise Architect.

How to define an approval process for requirements or requests?

- IRQA provides graphical workflows where the users will be able to define the allowed transitions and what roles can perform each transition.



How to enforce the defined RDM process?

- IRQA allows graphically defining the requirements, use cases and tests types and decomposition, and traceability between all of them, through the Block diagrams.
- IRQA can restrict the traceability to the one defined in the block diagrams, defining allowed and forbidden traceability.

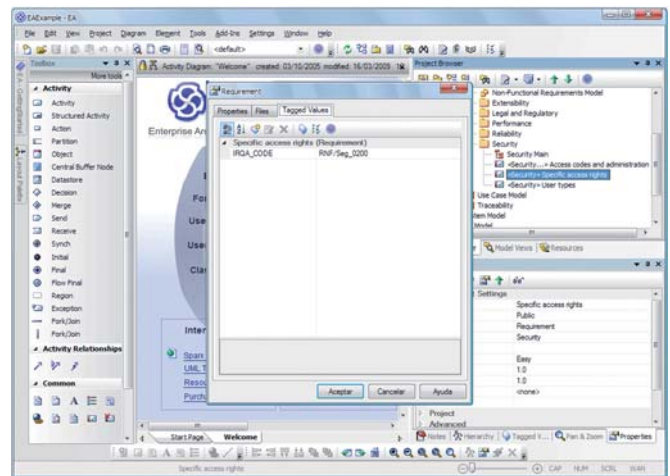


The integration

The IRQA - Sparx Enterprise Architect platform provides teams with the perfect fit to seamlessly integrate the different phases of the lifecycle, allowing each department use the most appropriate tool for the activity they are taking care of. This end-to-end integration bridges the communication gap between business and IT.

It also fosters the communication making the results of other teams visible from other environments and other roles, like the status of the design phase.

It helps establish, maintain, and take the most of the traceability between the artifacts in both phases in an efficient manner.



	IRQA to Sparx Enterprise Architect	Sparx Enterprise Architect to IRQA
REQUIREMENTS		
Requirements synchronization (code, name, description, attributes)	X	X
Requirements hierarchy	X	X
Traceability between requirements	X	X
Traceability between requirements and existing requirements in destination tool.	X	X
Traceability motives and direction.	X	X
Traceability between requirements and existing use cases in destination tool.	X	X
SERVICES		
Services synchronization (code, name, description, attributes) and scenarios	X (Services are represented as Use Case)	X (Use Cases are represented as Services)
Scenarios synchronization (steps: actor, step description, direction)	X (Scenarios are represented as Use Case steps)	X (Use Case steps are represented as Scenarios)
Traceability between services	X	X
Traceability between services and existing requirements in destination tool.	X (Extend and Use)	X (Extend and Use)
Traceability motives and direction.	X	X
Traceability between services and existing use cases in destination tool.	X	X